

Test Report

No. CANEC1100473405

Date: 01 Mar 2011

Page 1 of 7

FOSHAN BLUE ROCKET ELECTRONICS CO., LTD.
NO.45 GUXIN ROAD, CHANCHENG DISTRICT, FOSHAN, GUANGDONG
CHINA

The following sample(s) was/were submitted and identified on behalf of the clients as :
TO-92 Semiconductor Device

SGS Job No. : 12978097 - GZ

SGS Internal Reference No. : 12.5

Date of Sample Received : 23 Feb 2011

Testing Period : 23 Feb 2011 - 01 Mar 2011

Test Requested : Selected test(s) as requested by client.

Test Method : Please refer to next page(s).

Test Results : Please refer to next page(s).

Conclusion : Based on the performed tests on submitted sample(s), the results **comply with** the RoHS Directive 2002/95/EC and its subsequent amendments.

Signed for and on behalf of
SGS-CSTC Ltd.



Almay Gao
Approved Signatory

This document is issued by the Company subject to its General Conditions of Service printed overleaf, available on request or accessible at http://www.sgs.com/terms_and_conditions.htm and, for electronic format documents, subject to Terms and Conditions for Electronic Documents at www.sgs.com/terms_e-document.htm. Attention is drawn to the limitation of liability, indemnification and jurisdiction issues defined therein. Any holder of this document is advised that information contained hereon reflects the Company's findings at the time of its preparation only and within the limits of Client's instructions, if any. The Company's sole responsibility is to its Client and this document does not exonerate parties to a transaction from exercising all their rights and obligations under the transaction documents. This document cannot be reproduced except in full, without prior written approval of the Company. Any unauthorized alteration, forgery or falsification of the content or appearance of this document is unlawful and offenders may be prosecuted to the fullest extent of the law. Unless otherwise stated, the results shown in this test report refer only to the sample(s) tested.

Test Report

No. CANEC1100473405

Date: 01 Mar 2011

Page 2 of 7

Test Results:

ID for specimen 1 : CAN11-004734.006
 Description for specimen 1 : Black plastic w/ brown printing & chip

RoHS Directive 2002/95/EC

Test Item(s)	Unit	Test Method (Reference)	Result	MDL	Limit
Cadmium (Cd)	mg/kg	IEC 62321:2008, ICP-OES	N.D.	2	100
Lead (Pb)	mg/kg	IEC 62321:2008, ICP-OES	N.D.	2	1000
Mercury (Hg)	mg/kg	IEC 62321:2008, ICP-OES	N.D.	2	1000
Hexavalent Chromium (CrVI) by alkaline extraction	mg/kg	IEC 62321:2008, UV-Vis	N.D.	2	1000
Sum of PBBs	mg/kg	-	N.D.	-	1000
Monobromobiphenyl	mg/kg	IEC 62321:2008, GC-MS	N.D.	5	
Dibromobiphenyl	mg/kg	IEC 62321:2008, GC-MS	N.D.	5	
Tribromobiphenyl	mg/kg	IEC 62321:2008, GC-MS	N.D.	5	
Tetrabromobiphenyl	mg/kg	IEC 62321:2008, GC-MS	N.D.	5	
Pentabromobiphenyl	mg/kg	IEC 62321:2008, GC-MS	N.D.	5	
Hexabromobiphenyl	mg/kg	IEC 62321:2008, GC-MS	N.D.	5	
Heptabromobiphenyl	mg/kg	IEC 62321:2008, GC-MS	N.D.	5	
Octabromobiphenyl	mg/kg	IEC 62321:2008, GC-MS	N.D.	5	
Nonabromobiphenyl	mg/kg	IEC 62321:2008, GC-MS	N.D.	5	
Decabromobiphenyl	mg/kg	IEC 62321:2008, GC-MS	N.D.	5	
Sum of PBDEs	mg/kg	-	N.D.	-	1000
Monobromodiphenyl ether	mg/kg	IEC 62321:2008, GC-MS	N.D.	5	
Dibromodiphenyl ether	mg/kg	IEC 62321:2008, GC-MS	N.D.	5	
Tribromodiphenyl ether	mg/kg	IEC 62321:2008, GC-MS	N.D.	5	
Tetrabromodiphenyl ether	mg/kg	IEC 62321:2008, GC-MS	N.D.	5	
Pentabromodiphenyl ether	mg/kg	IEC 62321:2008, GC-MS	N.D.	5	
Hexabromodiphenyl ether	mg/kg	IEC 62321:2008, GC-MS	N.D.	5	
Heptabromodiphenyl ether	mg/kg	IEC 62321:2008, GC-MS	N.D.	5	
Octabromodiphenyl ether	mg/kg	IEC 62321:2008, GC-MS	N.D.	5	
Nonabromodiphenyl ether	mg/kg	IEC 62321:2008, GC-MS	N.D.	5	
Decabromodiphenyl ether	mg/kg	IEC 62321:2008, GC-MS	N.D.	5	

Note:

1. mg/kg = ppm
2. N.D. = Not Detected (< MDL)
3. MDL = Method Detection Limit
4. "-" = Not regulated

This document is issued by the Company subject to its General Conditions of Service printed overleaf, available on request or accessible at http://www.sgs.com/terms_and_conditions.htm and, for electronic format documents, subject to Terms and Conditions for Electronic Documents at www.sgs.com/terms_e-document.htm. Attention is drawn to the limitation of liability, indemnification and jurisdiction issues defined therein. Any holder of this document is advised that information contained hereon reflects the Company's findings at the time of its preparation only and within the limits of Client's instructions, if any. The Company's sole responsibility is to its Client and this document does not exonerate parties to a transaction from exercising all their rights and obligations under the transaction documents. This document cannot be reproduced except in full, without prior written approval of the Company. Any unauthorized alteration, forgery or falsification of the content or appearance of this document is unlawful and offenders may be prosecuted to the fullest extent of the law. Unless otherwise stated, the results shown in this test report refer only to the sample(s) tested.

Test Report

No. CANEC1100473405

Date: 01 Mar 2011

Page 3 of 7

ID for specimen 2 : CAN11-004734.007
 Description for specimen 2 : Copper-colored / silvery metal sheet

RoHS Directive 2002/95/EC

Test Item(s)	Unit	Test Method (Reference)	Result	MDL	Limit
Cadmium (Cd)	mg/kg	IEC 62321:2008, ICP-OES	N.D.	2	100
Lead (Pb)	mg/kg	IEC 62321:2008, ICP-OES	17	2	1000
Mercury (Hg)	mg/kg	IEC 62321:2008, ICP-OES	N.D.	2	1000
Hexavalent Chromium (CrVI) by boiling water extraction	-	IEC 62321:2008, UV-Vis	Negative	◇	#

Note:

1. mg/kg = ppm
2. N.D. = Not Detected (< MDL)
3. MDL = Method Detection Limit
4. ◇ = Spot-Test:
 Negative = Absence of CrVI coating, Positive = Presence of CrVI coating;
 (The tested sample should be further verified by boiling-water-extraction method if the spot test result is negative or cannot be confirmed.)
 Boiling-water-extraction:
 Negative = Absence of CrVI coating
 Positive = Presence of CrVI coating; the detected concentration in boiling-water-extraction solution is equal or greater than 0.02 mg/kg with 50 cm² sample surface area.
 Storage conditions and production date of the tested sample are unavailable and thus results of Cr(VI) represent status of the sample at the time of testing.
5. # = Positive indicates the presence of CrVI on the tested areas.
 Negative indicates the absence of CrVI on the tested areas.
6. "-" = Not regulated

This document is issued by the Company subject to its General Conditions of Service printed overleaf, available on request or accessible at http://www.sgs.com/terms_and_conditions.htm and, for electronic format documents, subject to Terms and Conditions for Electronic Documents at www.sgs.com/terms_e-document.htm. Attention is drawn to the limitation of liability, indemnification and jurisdiction issues defined therein. Any holder of this document is advised that information contained hereon reflects the Company's findings at the time of its interpretation only and within the limits of Client's instructions, if any. The Company's sole responsibility is to its Client and this document does not exonerate parties to a transaction from exercising all their rights and obligations under the transaction documents. This document cannot be reproduced except in full, without prior written approval of the Company. Any unauthorized alteration, forgery or falsification of the content or appearance of this document is unlawful and offenders may be prosecuted to the fullest extent of the law. Unless otherwise stated, the results shown in this test report refer only to the sample(s) tested.

Test Report

No. CANEC1100473405

Date: 01 Mar 2011

Page 4 of 7

ID for specimen 3 : CAN11-004734.008
 Description for specimen 3 : Silvery metal pin

RoHS Directive 2002/95/EC

Test Item(s)	Unit	Test Method (Reference)	Result	MDL	Limit
Cadmium (Cd)	mg/kg	IEC 62321:2008, ICP-OES	N.D.	2	100
Lead (Pb)	mg/kg	IEC 62321:2008, ICP-OES	12	2	1000
Mercury (Hg)	mg/kg	IEC 62321:2008, ICP-OES	N.D.	2	1000
Hexavalent Chromium (CrVI) by boiling water extraction	-	IEC 62321:2008, UV-Vis	Negative	◇	#

Note:

1. mg/kg = ppm
2. N.D. = Not Detected (< MDL)
3. MDL = Method Detection Limit
4. ◇ = Spot-Test:

Negative = Absence of CrVI coating, Positive = Presence of CrVI coating;
 (The tested sample should be further verified by boiling-water-extraction method if the spot test result is negative or cannot be confirmed.)

Boiling-water-extraction:

Negative = Absence of CrVI coating
 Positive = Presence of CrVI coating; the detected concentration in boiling-water-extraction solution is equal or greater than 0.02 mg/kg with 50 cm² sample surface area.

Storage conditions and production date of the tested sample are unavailable and thus results of Cr(VI) represent status of the sample at the time of testing.

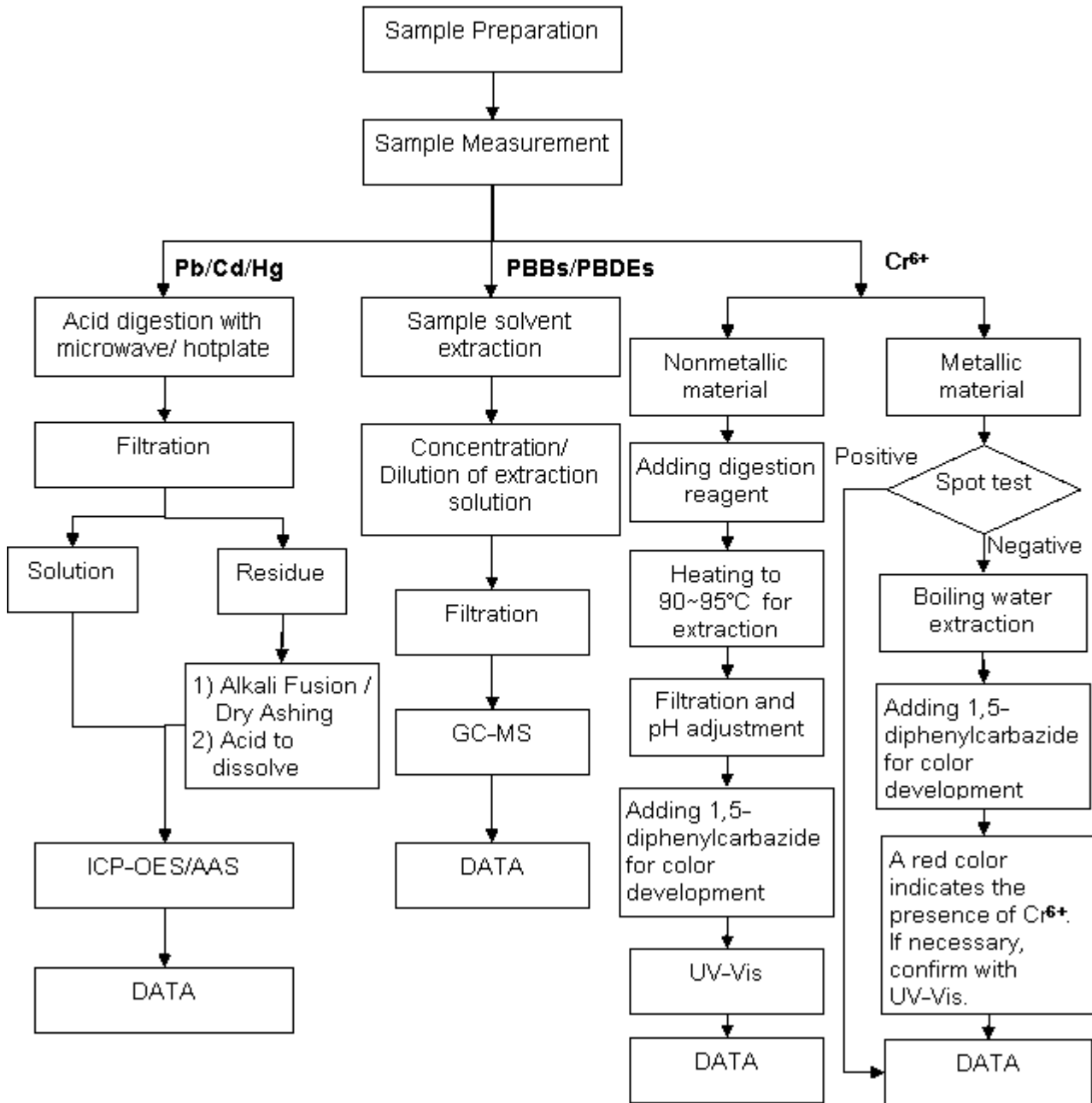
5. # = Positive indicates the presence of CrVI on the tested areas.
 Negative indicates the absence of CrVI on the tested areas.
6. "-" = Not regulated

This document is issued by the Company subject to its General Conditions of Service printed overleaf, available on request or accessible at http://www.sgs.com/terms_and_conditions.htm and, for electronic format documents, subject to Terms and Conditions for Electronic Documents at www.sgs.com/terms_e-document.htm. Attention is drawn to the limitation of liability, indemnification and jurisdiction issues defined therein. Any holder of this document is advised that information contained hereon reflects the Company's findings at the time of its implementation only and within the limits of Client's instructions, if any. The Company's sole responsibility is to its Client and this document does not exonerate parties to a transaction from exercising all their rights and obligations under the transaction documents. This document cannot be reproduced except in full, without prior written approval of the Company. Any unauthorized alteration, forgery or falsification of the content or appearance of this document is unlawful and offenders may be prosecuted to the fullest extent of the law. Unless otherwise stated, the results shown in this test report refer only to the sample(s) tested.

ATTACHMENTS

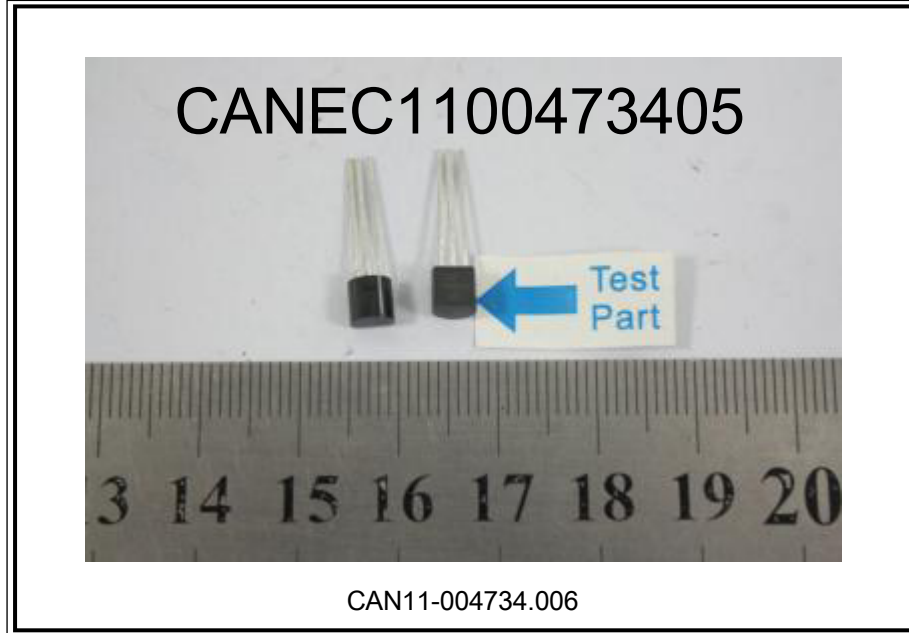
RoHS Testing Flow Chart

- 1) Name of the person who made testing: Bella Wang / Cutey Yu / Ross Zhan
- 2) Name of the person in charge of testing: Adams Yu / Ryan Yang
- 3) These samples were dissolved totally by pre-conditioning method according to below flow chart (Cr6+ and PBBs/PBDEs test method excluded).



This document is issued by the Company subject to its General Conditions of Service printed overleaf, available on request or accessible at http://www.sgs.com/terms_and_conditions.htm and, for electronic format documents, subject to Terms and Conditions for Electronic Documents at www.sgs.com/terms_e-document.htm. Attention is drawn to the limitation of liability, indemnification and jurisdiction issues defined therein. Any holder of this document is advised that information contained hereon reflects the Company's findings at the time of its preparation only and within the limits of Client's instructions, if any. The Company's sole responsibility is to its Client and this document does not exonerate parties to a transaction from exercising all their rights and obligations under the transaction documents. This document cannot be reproduced except in full, without prior written approval of the Company. Any unauthorized alteration, forgery or falsification of the content or appearance of this document is unlawful and offenders may be prosecuted to the fullest extent of the law. Unless otherwise stated, the results shown in this test report refer only to the sample(s) tested.

Sample photo:



This document is issued by the Company subject to its General Conditions of Service printed overleaf, available on request or accessible at http://www.sgs.com/terms_and_conditions.htm and, for electronic format documents, subject to Terms and Conditions for Electronic Documents at www.sgs.com/terms_e-document.htm. Attention is drawn to the limitation of liability, indemnification and jurisdiction issues defined therein. Any holder of this document is advised that information contained hereon reflects the Company's findings at the time of its preparation only and within the limits of Client's instructions, if any. The Company's sole responsibility is to its Client and this document does not exonerate parties to a transaction from exercising all their rights and obligations under the transaction documents. This document cannot be reproduced except in full, without prior written approval of the Company. Any unauthorized alteration, forgery or falsification of the content or appearance of this document is unlawful and offenders may be prosecuted to the fullest extent of the law. Unless otherwise stated, the results shown in this test report refer only to the sample(s) tested.



SGS authenticate the photo on original report only

*** End of Report ***

This document is issued by the Company subject to its General Conditions of Service printed overleaf, available on request or accessible at http://www.sgs.com/terms_and_conditions.htm and, for electronic format documents, subject to Terms and Conditions for Electronic Documents at www.sgs.com/terms_e-document.htm. Attention is drawn to the limitation of liability, indemnification and jurisdiction issues defined therein. Any holder of this document is advised that information contained hereon reflects the Company's findings at the time of its preparation only and within the limits of Client's instructions, if any. The Company's sole responsibility is to its Client and this document does not exonerate parties to a transaction from exercising all their rights and obligations under the transaction documents. This document cannot be reproduced except in full, without prior written approval of the Company. Any unauthorized alteration, forgery or falsification of the content or appearance of this document is unlawful and offenders may be prosecuted to the fullest extent of the law. Unless otherwise stated, the results shown in this test report refer only to the sample(s) tested.