



TEST REPORT

NUMBER: WUXH00002011

APPLICANT: NANTONG FUJITSU MICROELECTRONIC CO., DATE: MAY 17, 2010
LTD
NO.288, CHONGCHUAN ROAD, NANTONG,
JIANGSU, CHINA
ATTN: SHEN YING

SAMPLE DESCRIPTION:

ONE(1)PIECE OF SUBMITTED SAMPLE SAID TO BE:IC.
ITEM NAME : TSSOP8-NT.

TESTS CONDUCTED:

AS REQUESTED BY THE APPLICANT, FOR DETAILS REFER TO ATTACHED PAGE(S)

SUMMARY:

| <u>TESTED SAMPLE</u> | <u>STANDARD</u> | <u>RESULT</u> |
|----------------------|---|---------------|
| SUBMITTED SAMPLE | WITH REFERENCE TO TEST METHOD OF IEC 62321 EDITION 1.0: 2008 AND MAXIMUM CONCENTRATION LIMITS QUOTED FROM ROHS DIRECTIVES 2002/95/EC AND AMENDMENT 2005/618/EC | PASS |

TO BE CONTINUED

PREPARED AND CHECKED BY:
FOR INTERTEK TESTING SERVICES WUXI LTD.

JESSICA LU
GENERAL MANAGER



TEST REPORT

NUMBER: WUXH00002011

TESTS CONDUCTED

(A) TEST RESULT SUMMARY:

| TESTING ITEM | RESULT | |
|--|--------|-------|
| | (1) | (2) |
| CADMIUM (Cd) CONTENT (mg/kg) | ND | ND |
| LEAD (Pb) CONTENT (mg/kg) | 12 | ND |
| MERCURY (Hg) CONTENT (mg/kg) | ND | ND |
| CHROMIUM (VI) (Cr ⁶⁺) CONTENT (mg/kg) (FOR NON-METAL) | -- | ND |
| CHROMIUM (VI) (Cr ⁶⁺) RESULT(BY BOILING WATER EXTRACTION ON METAL) (mg/kg WITH 50cm ²) | ND | -- |
| POLYBROMINATED BIPHENYLS (PBBs) (mg/kg) | | |
| MONOBROMO BIPHENYLS (MonoBB) | -- | ND |
| DIBROMO BIPHENYLS (DiBB) | -- | ND |
| TRIBROMO BIPHENYLS (TriBB) | -- | ND |
| TETRABROMO BIPHENYLS (TetraBB) | -- | ND |
| PENTABROMO BIPHENYLS (PentaBB) | -- | ND |
| HEXABROMO BIPHENYLS (HexaBB) | -- | ND |
| HEPTABROMO BIPHENYLS (HeptaBB) | -- | ND |
| OCTABROMO BIPHENYLS (OctaBB) | -- | ND |
| NONABROMO BIPHENYLS (NonaBB) | -- | ND |
| DECABROMO BIPHENYL (DecaBB) | -- | ND |
| POLYBROMINATED DIPHENYL ETHERS (PBDEs) (mg/kg) | | |
| MONOBROMO DIPHENYL ETHERS (MonoBDE) | -- | ND |
| DIBROMO DIPHENYL ETHERS (DiBDE) | -- | ND |
| TRIBROMO DIPHENYL ETHERS (TriBDE) | -- | ND |
| TETRABROMO DIPHENYL ETHERS (TetraBDE) | -- | ND |
| PENTABROMO DIPHENYL ETHERS (PentaBDE) | -- | ND |
| HEXABROMO DIPHENYL ETHERS (HexaBDE) | -- | ND |
| HEPTABROMO DIPHENYL ETHERS (HeptaBDE) | -- | ND |
| OCTABROMO DIPHENYL ETHERS (OctaBDE) | -- | ND |
| NONABROMO DIPHENYL ETHERS (NonaBDE) | -- | ND |
| DECABROMO DIPHENYL ETHER (DecaBDE) | -- | ND |

REMARK:

mg/kg = MILLIGRAM PER KILOGRAM BASED ON DRY WEIGHT= ppm

ND = NOT DETECTED

TESTED COMPONENTS: (1) SILVERY METAL PIN. (2) BLACK BODY PLASTIC.

TO BE CONTINUED

(B) ROHS REQUIREMENT:

| RESTRICTED SUBSTANCES | LIMITS |
|-----------------------|--------|
|-----------------------|--------|



TEST REPORT

NUMBER: WUXH00002011

TESTS CONDUCTED

| | |
|--|-------------------|
| CADMIUM (Cd) | 0.01% (100 mg/kg) |
| LEAD (Pb) | 0.1% (1000 mg/kg) |
| MERCURY (Hg) | 0.1% (1000 mg/kg) |
| CHROMIUM (VI) (Cr ⁶⁺) | 0.1% (1000 mg/kg) |
| POLYBROMINATED BIPHENYLS (PBBs) | 0.1% (1000 mg/kg) |
| POLYBROMINATED DIPHENYL ETHERS (PBDEs) | 0.1% (1000 mg/kg) |

THE ABOVE LIMITS WERE QUOTED FROM 2002/95/EC AND AMENDMENT 2005/618/EC FOR HOMOGENEOUS MATERIAL.

(c) TEST METHOD:

| <u>TESTING ITEM</u> | <u>TESTING METHOD</u> | <u>REPORTING LIMIT</u> |
|--|--|--|
| CADMIUM (Cd) CONTENT | WITH REFERENCE TO IEC 62321 EDITION 1.0: 2008, BY ACID DIGESTION AND DETERMINED BY ICP-OES | 2 mg/kg |
| LEAD (Pb) CONTENT | WITH REFERENCE TO IEC 62321 EDITION 1.0: 2008, BY ACID DIGESTION AND DETERMINED BY ICP-OES | 2 mg/kg |
| MERCURY (Hg) CONTENT | WITH REFERENCE TO IEC 62321 EDITION 1.0: 2008, BY ACID DIGESTION AND DETERMINED BY ICP-OES | 2 mg/kg |
| CHROMIUM (VI) (Cr ⁶⁺) CONTENT (FOR NON-METAL) | WITH REFERENCE TO IEC 62321 EDITION 1.0: 2008, BY ALKALINE DIGESTION AND DETERMINED BY UV-VIS SPECTROPHOTOMETER | 1 mg/kg |
| CHROMIUM (VI) (Cr ⁶⁺) CONTENT (FOR METAL) | WITH REFERENCE TO IEC 62321 EDITION 1.0: 2008, BY BOILING WATER EXTRACTION AND DETERMINED BY UV-VIS SPECTROPHOTOMETER | 0.02mg/kg WITH 50cm ² (IN TESTING SOLUTION) |
| POLYBROMINATED BIPHENYLS (PBBs) & POLYBROMINATED DIPHENYL ETHERS (PBDEs) | WITH REFERENCE TO IEC IEC 62321 EDITION 1.0: 2008, BY SOLVENT EXTRACTION AND DETERMINED BY GC/MS AND FURTHER HPLC CONFIRMATION WHEN NECESSARY. | 5 mg/kg |

DATE SAMPLE RECEIVED: MAY 12, 2010

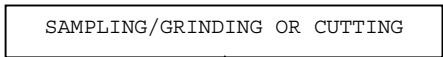
TESTING PERIOD: MAY 12, 2010 TO MAY 14, 2010

TO BE CONTINUED

(D) MEASUREMENT FLOWCHART:

TEST FOR Cd/Pb/Hg/Cr (VI)/PBBs/PBDEs CONTENTS

REFERENCE STANDARD: IEC 62321 EDITION 1.0: 2008



Intertek Testing Services Wuxi Ltd.

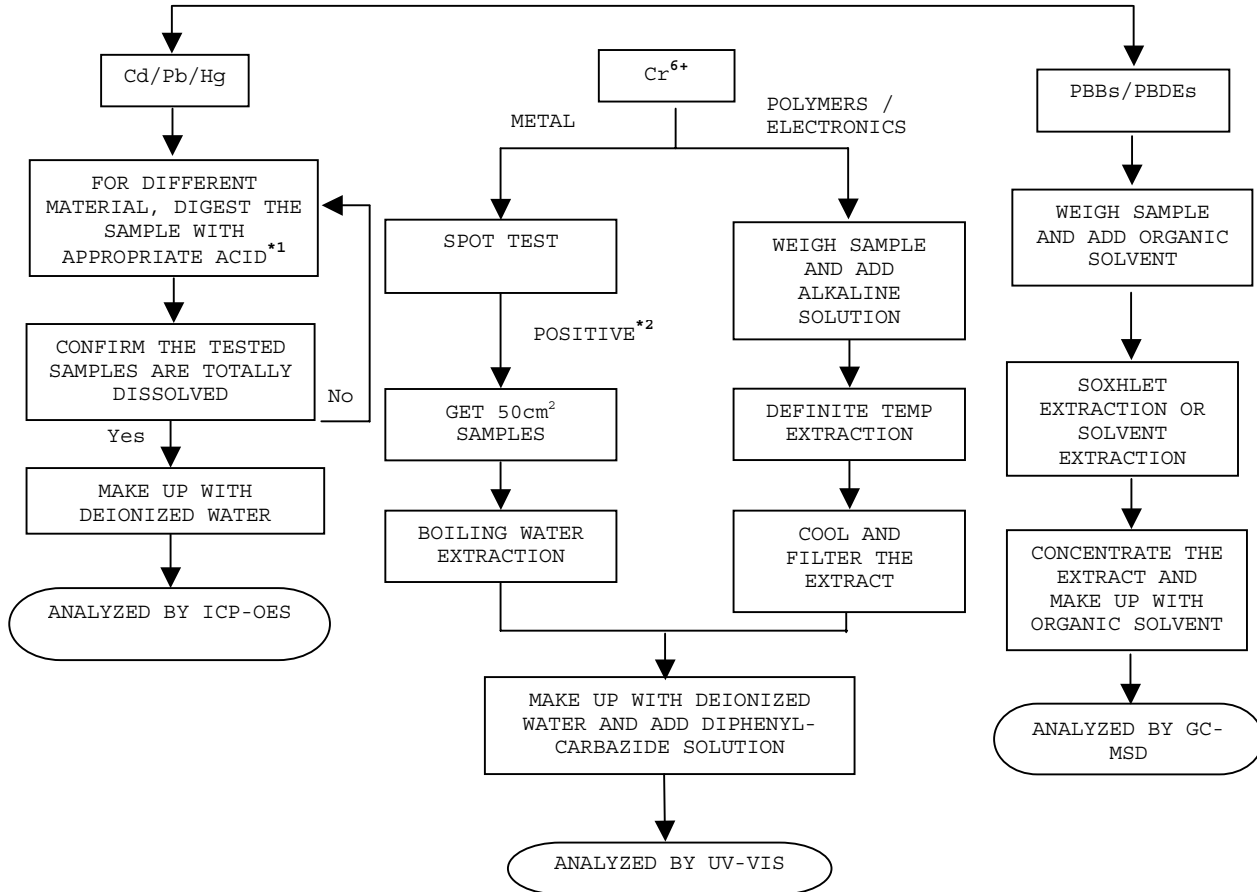
No.8 Fubei Road, Xishan Economic Development Zone, Wuxi 214101, Jiangsu, China

Tel: +86 510 8821 4567 Fax: +86 510 8820 0428 E-mail: consumergoods.wuxi@intertek.com

TEST REPORT

NUMBER: WUXH00002011

TESTS CONDUCTED



CHEMIST: INORGANIC (ANN LUO/FRED WANG/ALLY WAN)
 ORGANIC (JENNY XU/CHERRY SUN)

REMARKS:

*1: LIST OF APPROPRIATE ACID:

| MATERIAL | ACID ADDED FOR DIGESTION |
|-------------|--|
| POLYMERS | HNO ₃ , HCl, HF, H ₂ O ₂ , H ₃ BO ₃ |
| METALS | HNO ₃ , HCl, HF |
| ELECTRONICS | HNO ₃ , HCl, H ₂ O ₂ , HBF ₄ |

*2: IF THE RESULT OF SPOT TEST IS POSITIVE, CHROMIUM VI WOULD BE DETERMINED AS DETECTED.

TO BE CONTINUED



TEST REPORT

NUMBER: WUXH00002011

TESTS CONDUCTED
PERFLUOROOCTANE SULFONATES (PFOS) AND PERFLUOROOCTANOIC ACID (PFOA)
CONTENT:

BY SOLVENT EXTRACTION AND FOLLOWED BY LIQUID CHROMATOGRAPHY-MASS SPECTROMETRIC (LC-MS) ANALYSIS.

| <u>COMPOUND</u> | <u>RESULT (ppm)</u> | |
|----------------------------|---------------------|-----|
| | (1) | (2) |
| PERFLUOROOCTANE SULFONATES | <1 | <1 |
| PERFLUOROOCTANOIC ACID | <1 | <1 |

REMARK : < = LESS THAN
ppm = PARTS PER MILLION = mg/kg
DETECTION LIMIT = 1.0 ppm

TESTED COMPONENTS:

- (1) SILVERY METAL PIN.
- (2) BLACK BODY PLASTIC.

DATE SAMPLE RECEIVED :MAY 12, 2010

TESTING PERIOD :MAY 12, 2010 TO MAY 14, 2010

TO BE CONTINUED

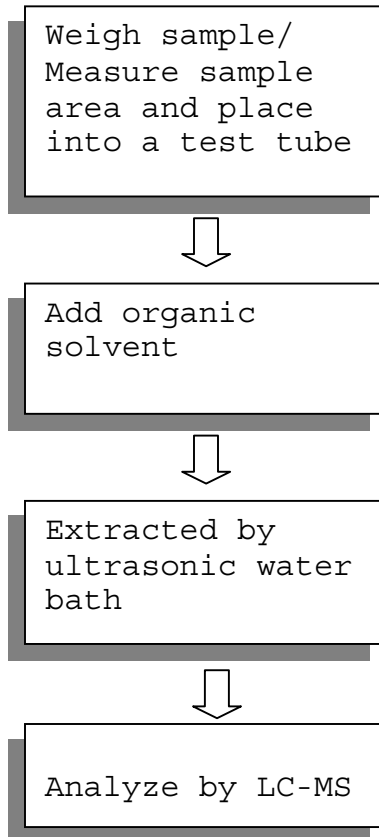
TEST REPORT

NUMBER: WUXH00002011

TESTS CONDUCTED

MEASUREMENT FLOWCHART:

TEST FOR **PERFLUOROOCTANE SULFONATES (PFOS) AND PERFLUOROOCTANOIC ACID (PFOA)** CONTENT:



TO BE CONTINUED



TEST REPORT

NUMBER: WUXH00002011

TESTS CONDUCTED

(I) TEST RESULT SUMMARY :
HALOGEN CONTENT :

| <u>TESTING ITEM</u> | <u>RESULT (ppm)</u> |
|-----------------------|---------------------|
| | (1) |
| FLUORINE (F) CONTENT | ND |
| CHLORINE (Cl) CONTENT | ND |
| BROMINE (Br) CONTENT | ND |
| IODINE (I) CONTENT | ND |

REMARKS : ppm = PARTS PER MILLION = mg/kg
ND = NOT DETECTED

TESTED COMPONENT: (1) BLACK BODY PLASTIC.

DATE SAMPLE RECEIVE: MAY 12, 2010

TEST PERIOD: MAY 12, 2010 TO MAY 14, 2010

(II) TEST METHOD :

| <u>TESTING ITEM</u> | <u>TESTING METHOD</u> | <u>REPORTING LIMIT</u> |
|--------------------------------|---|------------------------|
| HALOGEN (F, Cl, Br, I) CONTENT | WITH REFERENCE TO EN 14582:2007 BY COMBUSTION IN A CALORIMETRIC BOMB AND DETERMINED BY ION CHROMATOGRAPHY | 50 ppm |

REMARKS : REPORTING LIMIT = QUANTITATION LIMIT OF ANALYTE IN SAMPLE

TO BE CONTINUED

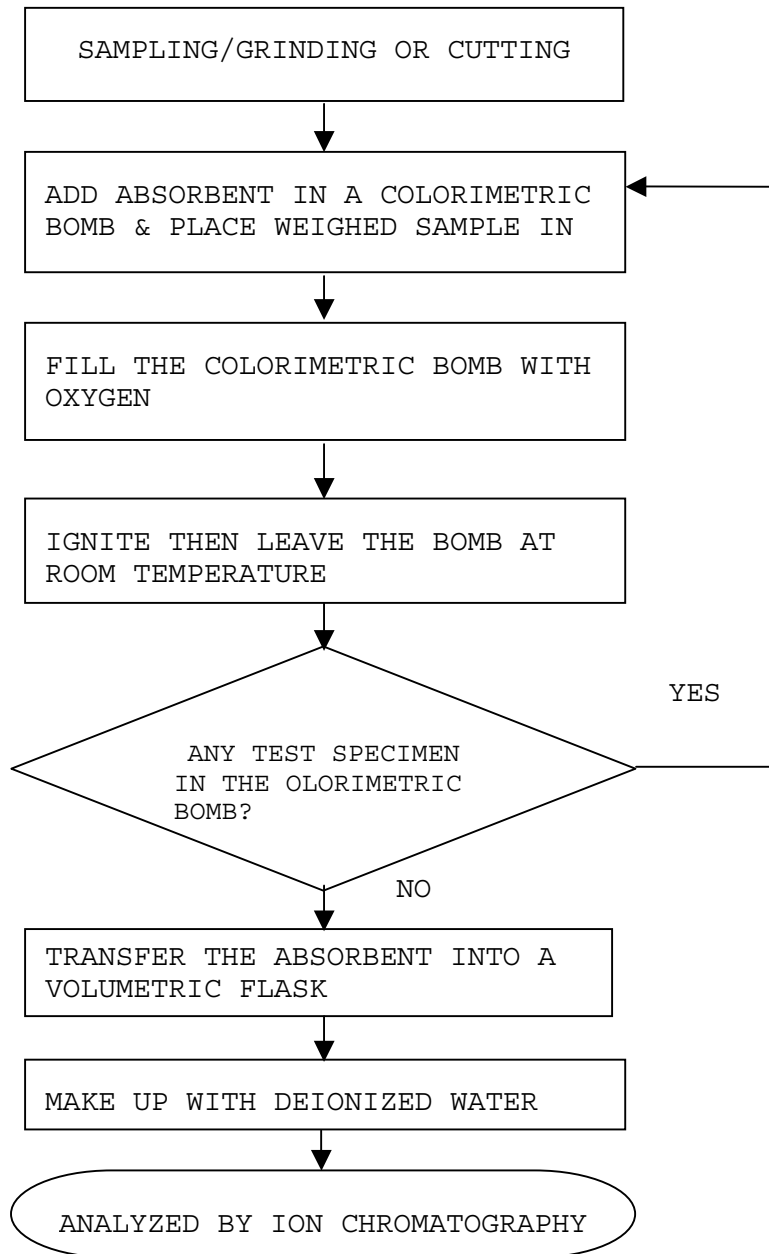


TEST REPORT

NUMBER: WUXH00002011

TESTS CONDUCTED

(III) MEASUREMENT FLOWCHART:
TEST FOR HALOGEN CONTENT
REFERENCE METHOD: EN 14582:2007



CHEMIST: FRED WANG/ ALLY WAN

TO BE CONTINUED



TEST REPORT

NUMBER: WUXH00002011

TESTS CONDUCTED

TOTAL (Sb) CONTENT

AS PER CLIENT'S REQUEST, ACID DIGESTION METHOD WAS USED AND TOTAL CONTENT WAS DETERMINED BY INDUCTIVELY COUPLED ARGON PLASMA SPECTROMETRY.

| <u>TESTED COMPONENT</u> | <u>RESULT IN ppm</u> |
|-------------------------|----------------------|
| (1) | <5 |

ppm = PARTS PER MILLION =MG/KG
< = LESS THA

TESTED COMPONENT: (1)BLACK BODY PLASTIC.
DATE SAMPLE RECEIVED : MAY 12, 2010
TESTING PERIOD : MAY 12, 2010 TO MAY 14, 2010

TO BE CONTINUED

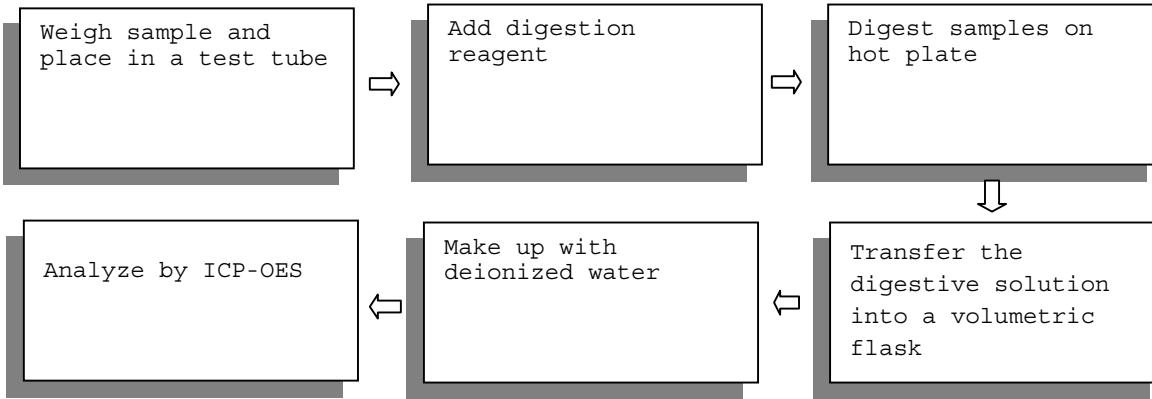
TEST REPORT

NUMBER: WUXH00002011

TESTS CONDUCTED

MEASUREMENT FLOWCHART

1. TEST FOR Sb CONTENTS



TO BE CONTINUED

TEST REPORT

NUMBER: WUXH00002011

TESTS CONDUCTED

PHOTO



END OF REPORT