



Test Report

No.: CQTC1003902/CHEM

Date: November 4, 2010

Page 1 of 6

SICHUAN DAYAN MICROELECTRONICS CO., LTD
1#, YULONG ROAD, SUINING CITY SICHUAN, P.R.C.

The following sample(s) was/were submitted and identified on behalf of the applicant as: (T) SOT-2X

SGS Job No. : 12807990
SGS Internal Reference No. : 3.1
Sample information : 1. Lead Frame (Cu) 2. Epoxy 3. Wire (Au/Cu) 4. Compound (EME-G600/KL-G450) 5. Plating (Pure Sn)
Date of Sample Received : October 29, 2010
Testing Period : October 29, 2010 to November 4, 2010
Test Requested : Selected tests as requested by client.
Test Method (Reference) : Please refer to next pages.
Test Results : Please refer to next pages.
Conclusion : A: Based on the performed tests on submitted samples, the results **comply with** the RoHS Directive 2002/95/EC and its subsequent amendments.

Signed for and on behalf of
SGS-CSTC Ltd.

Rain Qiao
Approved Signatory

This document is issued by the Company under its General Conditions of Service printed overleaf or available on request and accessible at http://www.sgs.com/terms_and_conditions.htm. Attention is drawn to the limitation of liability, indemnification and jurisdiction issues defined therein. Any holder of this document is advised that information contained hereon reflects the Company's findings at the time of its intervention only and within the limits of Client's instructions, if any. The Company's sole responsibility is to its Client and this document does not exonerate parties to a transaction from exercising all their rights and obligations under the transaction documents. Any unauthorized alteration, forgery or falsification of the content or appearance of this document is unlawful and offenders may be prosecuted to the fullest extent of the law. Unless otherwise stated the results shown in this test report refer only to the sample(s) tested. This document cannot be reproduced except in full, without prior approval of the Company.



No.98, Songpai Road, Yubei District, Chongqing, China 401147
中国·重庆·渝北区松牌路98号 邮编: 401147

t (86-23) 67070635
t (86-23) 67070635

f (86-23) 67613247
f (86-23) 67613247

www.cn.sgs.com
e sgs.china@sgs.com

Member of the SGS Group (SGS SA)

Test Results:

Description for specimen 1 : Black body with silvery pin

A: RoHS Directive 2002/95/EC

Test Item(s)	Unit	Test Method (Reference)	Result	MDL	Limit
Cadmium (Cd)	mg/kg	IEC 62321: 2008, ICP-OES	N.D.	2	100
Lead (Pb)	mg/kg	IEC 62321: 2008, ICP-OES	N.D.	2	1000
Mercury (Hg)	mg/kg	IEC 62321: 2008, ICP-OES	N.D.	2	1000
Hexavalent Chromium (CrVI) by alkaline extraction	mg/kg	IEC 62321: 2008, UV-Vis	N.D.	2	1000
Sum of PBBs	mg/kg	-	N.D.	-	1000
Monobromobiphenyl	mg/kg	IEC 62321: 2008, GC-MS	N.D.	5	
Dibromobiphenyl	mg/kg	IEC 62321: 2008, GC-MS	N.D.	5	
Tribromobiphenyl	mg/kg	IEC 62321: 2008, GC-MS	N.D.	5	
Tetrabromobiphenyl	mg/kg	IEC 62321: 2008, GC-MS	N.D.	5	
Pentabromobiphenyl	mg/kg	IEC 62321: 2008, GC-MS	N.D.	5	
Hexabromobiphenyl	mg/kg	IEC 62321: 2008, GC-MS	N.D.	5	
Heptabromobiphenyl	mg/kg	IEC 62321: 2008, GC-MS	N.D.	5	
Octabromobiphenyl	mg/kg	IEC 62321: 2008, GC-MS	N.D.	5	
Nonabromobiphenyl	mg/kg	IEC 62321: 2008, GC-MS	N.D.	5	
Decabromobiphenyl	mg/kg	IEC 62321: 2008, GC-MS	N.D.	5	
Sum of PBDEs	mg/kg	-	N.D.	-	1000
Monobromodiphenyl ether	mg/kg	IEC 62321: 2008, GC-MS	N.D.	5	
Dibromodiphenyl ether	mg/kg	IEC 62321: 2008, GC-MS	N.D.	5	
Tribromodiphenyl ether	mg/kg	IEC 62321: 2008, GC-MS	N.D.	5	
Tetrabromodiphenyl ether	mg/kg	IEC 62321: 2008, GC-MS	N.D.	5	
Pentabromodiphenyl ether	mg/kg	IEC 62321: 2008, GC-MS	N.D.	5	
Hexabromodiphenyl ether	mg/kg	IEC 62321: 2008, GC-MS	N.D.	5	
Heptabromodiphenyl ether	mg/kg	IEC 62321: 2008, GC-MS	N.D.	5	
Octabromodiphenyl ether	mg/kg	IEC 62321: 2008, GC-MS	N.D.	5	
Nonabromodiphenyl ether	mg/kg	IEC 62321: 2008, GC-MS	N.D.	5	
Decabromodiphenyl ether	mg/kg	IEC 62321: 2008, GC-MS	N.D.	5	

Note:

1. mg/kg = ppm
2. N.D. = Not Detected (< MDL)
3. MDL = Method Detection Limit
4. "-" = Not regulated

This document is issued by the Company under its General Conditions of Service printed overleaf or available on request and accessible at http://www.sgs.com/terms_and_conditions.htm. Attention is drawn to the limitation of liability, indemnification and jurisdiction issues defined therein. Any holder of this document is advised that information contained hereon reflects the Company's findings at the time of its intervention only and within the limits of Client's instructions, if any. The Company's sole responsibility is to its Client and this document does not exonerate parties to a transaction from exercising all their rights and obligations under the transaction documents. Any unauthorized alteration, forgery or falsification of the content or appearance of this document is unlawful and offenders may be prosecuted to the fullest extent of the law. Unless otherwise stated the results shown in this test report refer only to the sample(s) tested. This document cannot be reproduced except in full, without prior approval of the Company.

B: Halogen

Test Item(s)	Unit	Test Method (Reference)	Result	MDL
Fluorine (F)	mg/kg	BS EN 14582:2007, IC	N.D.	50
Chlorine (Cl)	mg/kg	BS EN 14582:2007, IC	N.D.	50
Bromine (Br)	mg/kg	BS EN 14582:2007, IC	N.D.	50
Iodine (I)	mg/kg	BS EN 14582:2007, IC	N.D.	50

Note:

1. mg/kg = ppm
2. N.D. = Not Detected (< MDL)
3. MDL = Method Detection Limit

Remark: As requested by client, the testing was conducted as whole / part sample, for the sample can't be disjointed

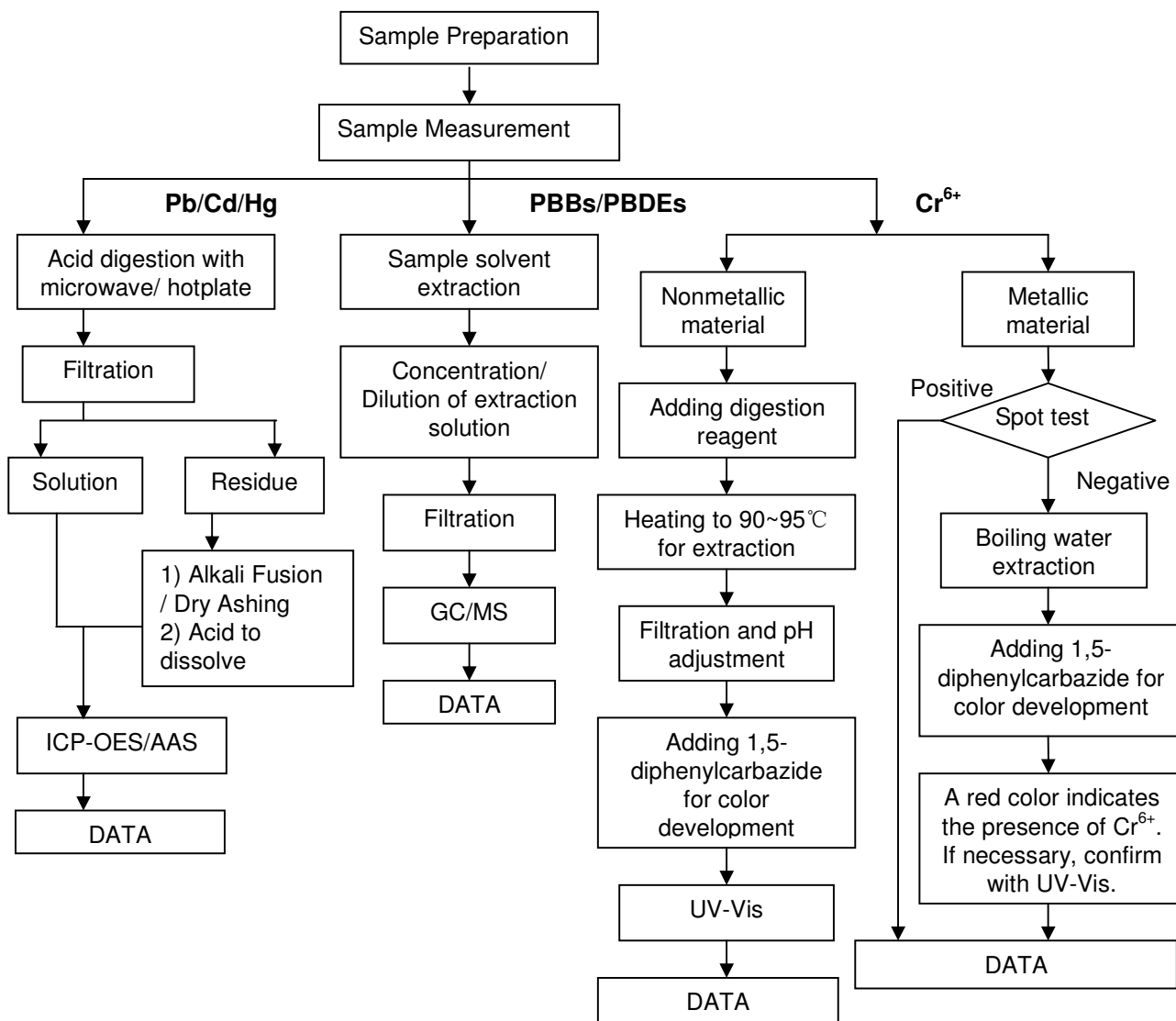
This document is issued by the Company under its General Conditions of Service printed overleaf or available on request and accessible at http://www.sgs.com/terms_and_conditions.htm. Attention is drawn to the limitation of liability, indemnification and jurisdiction issues defined therein. Any holder of this document is advised that information contained hereon reflects the Company's findings at the time of its intervention only and within the limits of Client's instructions, if any. The Company's sole responsibility is to its Client and this document does not exonerate parties to a transaction from exercising all their rights and obligations under the transaction documents. Any unauthorized alteration, forgery or falsification of the content or appearance of this document is unlawful and offenders may be prosecuted to the fullest extent of the law. Unless otherwise stated the results shown in this test report refer only to the sample(s) tested. This document cannot be reproduced except in full, without prior approval of the Company.



ATTACHMENTS

RoHS Testing Flow Chart

- 1) Name of the person who made testing: Lorin Long/Roger Yang/Leo Wang
- 2) Name of the person in charge of testing: Rain Qiao

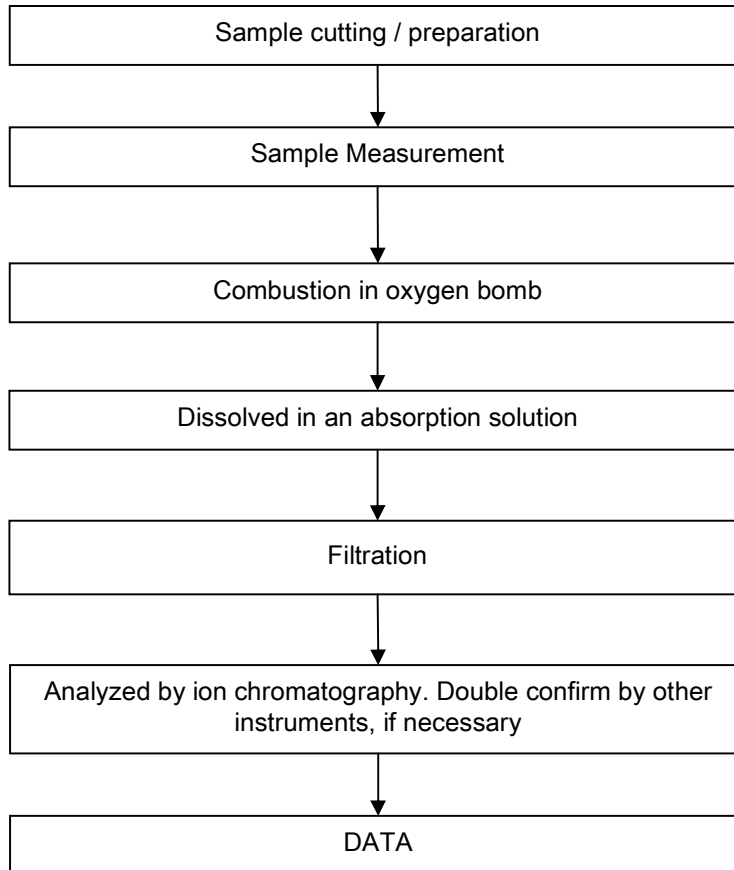


This document is issued by the Company under its General Conditions of Service printed overleaf or available on request and accessible at http://www.sgs.com/terms_and_conditions.htm. Attention is drawn to the limitation of liability, indemnification and jurisdiction issues defined therein. Any holder of this document is advised that information contained hereon reflects the Company's findings at the time of its intervention only and within the limits of Client's instructions, if any. The Company's sole responsibility is to its Client and this document does not exonerate parties to a transaction from exercising all their rights and obligations under the transaction documents. Any unauthorized alteration, forgery or falsification of the content or appearance of this document is unlawful and offenders may be prosecuted to the fullest extent of the law. Unless otherwise stated the results shown in this test report refer only to the sample(s) tested. This document cannot be reproduced except in full, without prior approval of the Company.

ATTACHMENTS

Halogen Testing Flow Chart

- 1) Name of the person who made testing: Roger Yang
- 2) Name of the person in charge of testing: Rain Qiao



This document is issued by the Company under its General Conditions of Service printed overleaf or available on request and accessible at http://www.sgs.com/terms_and_conditions.htm. Attention is drawn to the limitation of liability, indemnification and jurisdiction issues defined therein. Any holder of this document is advised that information contained hereon reflects the Company's findings at the time of its intervention only and within the limits of Client's instructions, if any. The Company's sole responsibility is to its Client and this document does not exonerate parties to a transaction from exercising all their rights and obligations under the transaction documents. Any unauthorized alteration, forgery or falsification of the content or appearance of this document is unlawful and offenders may be prosecuted to the fullest extent of the law. Unless otherwise stated the results shown in this test report refer only to the sample(s) tested. This document cannot be reproduced except in full, without prior approval of the Company.

Sample photo:



SGS authenticate the photo on original report only

*** End of Report ***

This document is issued by the Company under its General Conditions of Service printed overleaf or available on request and accessible at http://www.sgs.com/terms_and_conditions.htm. Attention is drawn to the limitation of liability, indemnification and jurisdiction issues defined therein. Any holder of this document is advised that information contained hereon reflects the Company's findings at the time of its intervention only and within the limits of Client's instructions, if any. The Company's sole responsibility is to its Client and this document does not exonerate parties to a transaction from exercising all their rights and obligations under the transaction documents. Any unauthorized alteration, forgery or falsification of the content or appearance of this document is unlawful and offenders may be prosecuted to the fullest extent of the law. Unless otherwise stated the results shown in this test report refer only to the sample(s) tested. This document cannot be reproduced except in full, without prior approval of the Company.