

检测报告

Test Report

报告编号 :RLSZD00092195
Report No.:RLSZD00092195

第 1 页 共 8 页
Page 1 of 8

申请单位 :四川大雁微电子有限公司
Applicant :SICHUAN DAYAN MICROELECTRONICS CO.,LTD.
地址 :四川省遂宁市玉龙路 1 号
Address :1#,YULONG ROAD,SUINING CITY,SICHUAN,P.R.C

样品信息 Report on the submitted sample(s) said to be:

样品名称 Sample Name :请参见下页 Please refer to the following page.
样品描述 Sample Description :请参见下页 Please refer to the following page.
颜色 Color :请参见下页 Please refer to the following page.
材质 Material :请参见下页 Please refer to the following page.
制造商 :四川大雁微电子有限公司
Manufacturer SICHUAN DAYAN MICROELECTRONICS CO.,LTD.
样品接收日期 :2011.06.01
Sample Received Date Jun. 1, 2011
样品检测日期 :2011.06.01 -2011.06.7
Testing Period Jun. 1, 2011 to Jun. 7, 2011

检测要求 :1.根据客户要求,测定所提交样品中的铅、镉、汞、六价铬、多溴联苯和多溴二苯醚的含量。
2.根据客户要求,检测所提交样品是否含有六价铬。
Test Requested 1.As specified by client, to determine the Lead, Cadmium, Mercury, Hexavalent Chromium, PBBs&PBDEs content in the submitted sample.
2.As specified by client, to identify if there is the Hexavalent Chromium in the submitted sample.

检测依据/检测结果: 请参见下页。

Test Method/Test Result(s): Please refer to the following page(s).

主 检:
Tested by
签 发:
Approved by



技
Technical Manager

审 核:
Inspected by
签发日期:
Date

Vargas

2011.06.07

Jun. 7, 2011

No. 15508554

检测报告

Test Report

报告编号 :RLSZD00092195
Report No.:RLSZD00092195

第 2 页 共 8 页
Page 2 of 8

序号 No.	样品名称 Sample Name	样品描述 Sample Description	颜色 Color	材质 Material
1	TO-220	带有银色金属和棕色印字的黑色本体 Black body with silver color metal and brown printing	黑色 Black	混合物
2		带有银色覆盖层的金属 Metal with silver color plating	金属	铜、锡

检测报告

Test Report

报告编号 :RLSZD00092195

Report No.:RLSZD00092195

第 3 页 共 8 页

Page 3 of 8

检测依据 Test Method:

测试项目 Tested Item(s)	测试方法 Test Method	测试仪器 Measured Equipment(s)	方法检测限 MDL
铅 Lead (Pb)	IEC 62321:2008 Ed.1 Sec.9	ICP-OES	2 mg/kg
	IEC 62321:2008 Ed.1 Sec.10		
镉 Cadmium (Cd)	IEC 62321:2008 Ed.1 Sec.9	ICP-OES	2 mg/kg
	IEC 62321:2008 Ed.1 Sec.10		
汞 Mercury (Hg)	IEC 62321:2008 Ed.1 Sec.7	ICP-OES	2 mg/kg
六价铬 Hexavalent Chromium (Cr(VI))	IEC 62321:2008 Ed.1 Annex B	UV-Vis	/
	IEC 62321:2008 Ed.1 Annex C		2 mg/kg
多溴联苯 Polybrominated Biphenyls (PBBs)	IEC 62321:2008 Ed.1 Annex A	GC-MS	5 mg/kg
多溴二苯醚 Polybrominated Diphenyl Ethers (PBDEs)	IEC 62321:2008 Ed.1 Annex A	GC-MS	5 mg/kg

检测结果 Test Result(s):

测试项目 Tested Item(s)	含量 Content	
	样品 1 Sample No.1	样品 2 Sample No.2
铅 Lead (Pb)	1728 mg/kg [#]	28 mg/kg
镉 Cadmium (Cd)	N.D.	N.D.
汞 Mercury (Hg)	N.D.	N.D.
六价铬 Hexavalent Chromium (Cr(VI))	N.D.	/

测试项目 Tested Item(s)	结论 Conclusion
	样品 2 Sample No.2
六价铬 Hexavalent Chromium (Cr(VI))	Negative

检测报告

Test Report

报告编号 :RLSZD00092195
 Report No.:RLSZD00092195
 检测结果 Test Result(s):

第 4 页 共 8 页
 Page 4 of 8

测试项目 Tested Item(s)	含量 Content
	样品 1 Sample No.1
多溴联苯 Polybrominated Biphenyls(PBBs)	
一溴联苯 Monobromobiphenyl	N.D.
二溴联苯 Dibromobiphenyl	N.D.
三溴联苯 Tribromobiphenyl	N.D.
四溴联苯 Tetrabromobiphenyl	N.D.
五溴联苯 Pentabromobiphenyl	N.D.
六溴联苯 Hexabromobiphenyl	N.D.
七溴联苯 Heptabromobiphenyl	N.D.
八溴联苯 Octabromobiphenyl	N.D.
九溴联苯 Nonabromobiphenyl	N.D.
十溴联苯 Decabromobiphenyl	N.D.
多溴二苯醚 Polybrominated Diphenyl Ethers(PBDEs)	
一溴二苯醚 Monobromodiphenyl ether	N.D.
二溴二苯醚 Dibromodiphenyl ether	N.D.
三溴二苯醚 Tribromodiphenyl ether	N.D.
四溴二苯醚 Tetrabromodiphenyl ether	N.D.
五溴二苯醚 Pentabromodiphenyl ether	N.D.
六溴二苯醚 Hexabromodiphenyl ether	N.D.
七溴二苯醚 Heptabromodiphenyl ether	N.D.
八溴二苯醚 Octabromodiphenyl ether	N.D.
九溴二苯醚 Nonabromodiphenyl ether	N.D.
十溴二苯醚 Decabromodiphenyl ether	N.D.

注释: 对于检测铅, 镉, 汞之样品已完全溶解。

-N.D. = 未检出 (小于方法检测限)

-mg/kg = ppm = 百万分之几

-Negative 表示阴性

阴性=不含有六价铬, 由表面积为 50cm² 的样品所萃取出来的溶液中的六价铬的浓度小于 0.02mg/kg

Note: The sample had been dissolved totally tested for Lead, Cadmium, Mercury.

-MDL = Method Detection Limit

-N.D. = Not Detected (<MDL)

-mg/kg = ppm = parts per million

-Negative = Absence of Cr(VI), the detected Cr(VI) concentration in the boiling water extraction solution is less than 0.02 mg/kg with 50cm² sample surface area used.

检测报告

Test Report

报告编号 :RLSZD00092195

第 5 页 共 8 页

Report No.:RLSZD00092195

Page 5 of 8

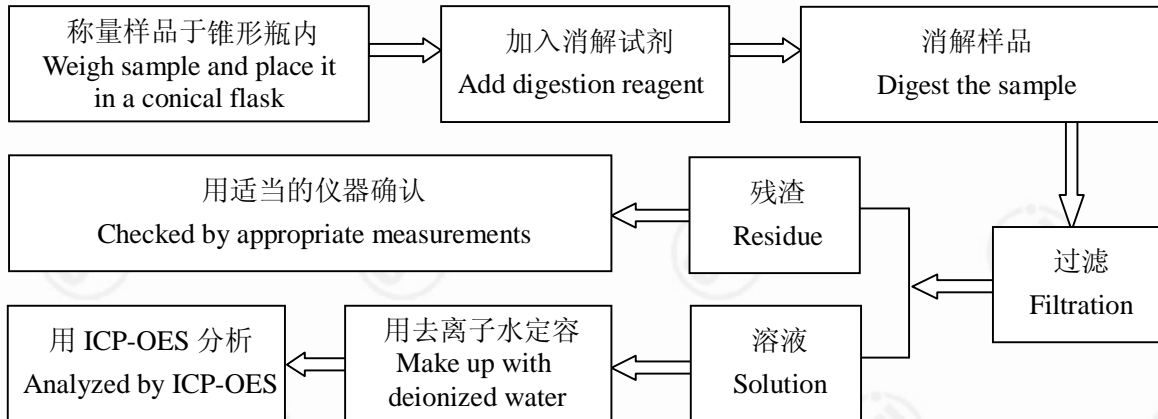
备注: #根据 RoHS 2002/95/EC 和 2010/571/EU 指令, 铅在高温融化焊料中可豁免(如:铅含量大于或等于 85%的铅基合金)。

Remark: #According to RoHS directive 2002/95/EC and 2010/571/EU, Lead is exempted in high melting temperature type solders

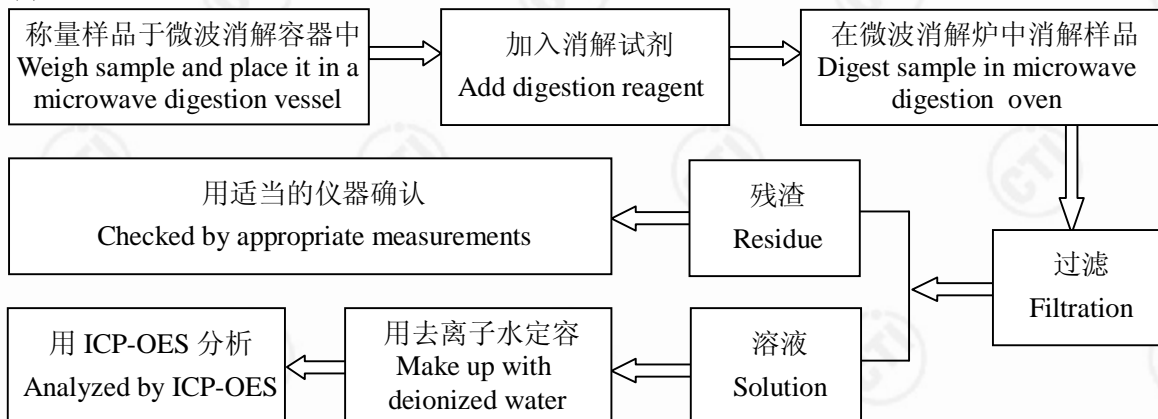
检测流程 Test Process:

1. 测定铅/镉含量 Test for Pb/Cd Content

(1) IEC 62321:2008 Ed.1 Sec.9



(2) IEC 62321:2008 Ed.1 Sec.10



检测报告

Test Report

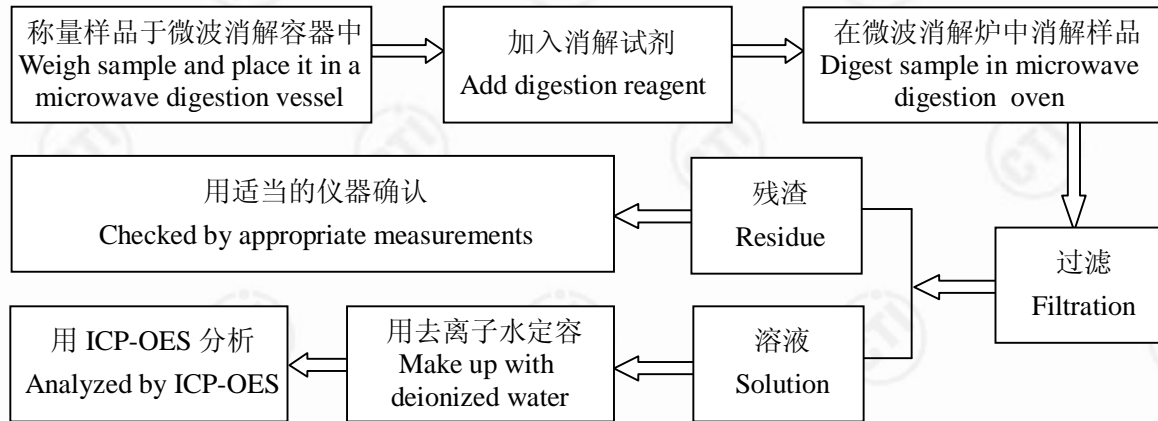
报告编号 :RLSZD00092195

Report No.:RLSZD00092195

第 6 页 共 8 页

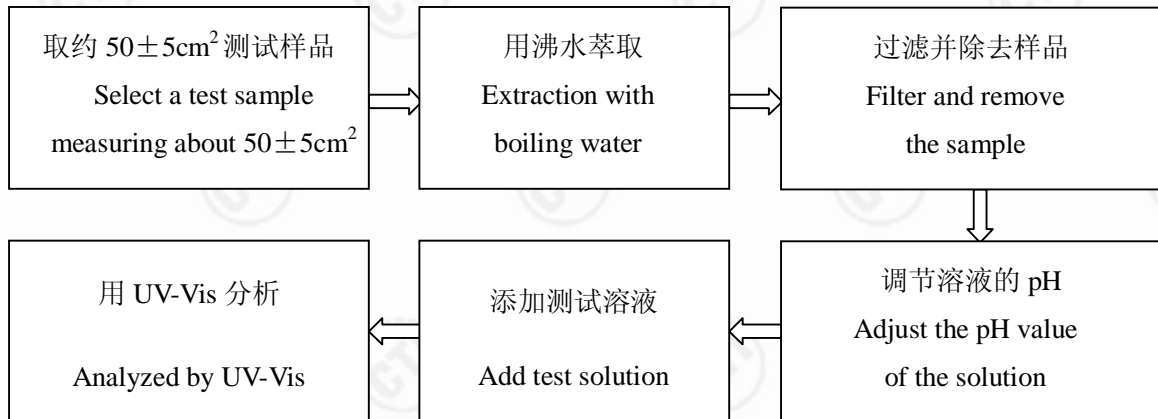
Page 6 of 8

2. 测定汞含量 Test for Hg Content

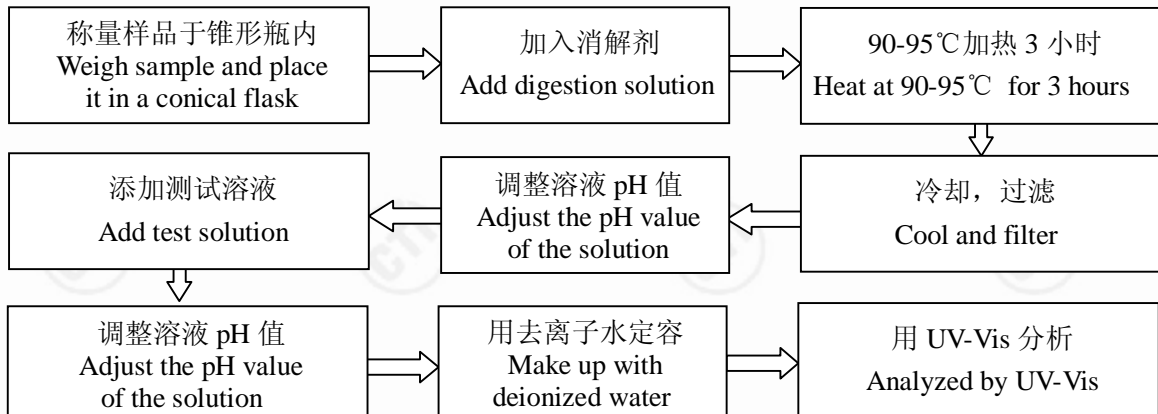


3. 测定六价铬含量 Test for Chromium(VI) Content

(1) IEC 62321:2008 Ed. 1 Annex B



(2) IEC 62321:2008 Ed. 1 Annex C



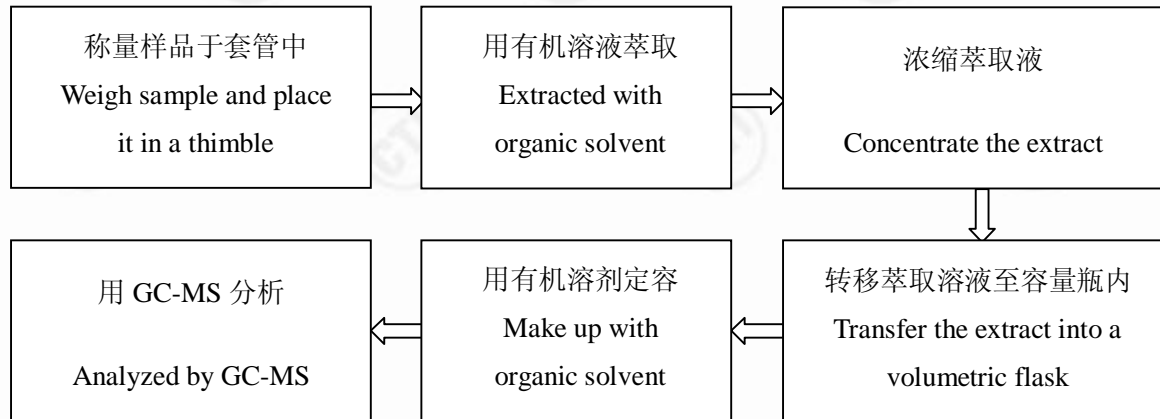
检测报告

Test Report

报告编号 :RLSZD00092195
Report No.:RLSZD00092195

第 7 页 共 8 页
Page 7 of 8

4. 测定多溴联苯/多溴二苯醚含量 Test for PBBs/PBDEs Content



检测报告 Test Report

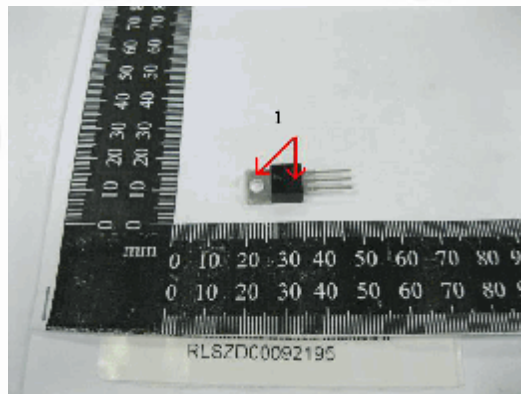
报告编号 :RLSZD00092195
Report No.:RLSZD00092195

第 8 页 共 8 页
Page 8 of 8

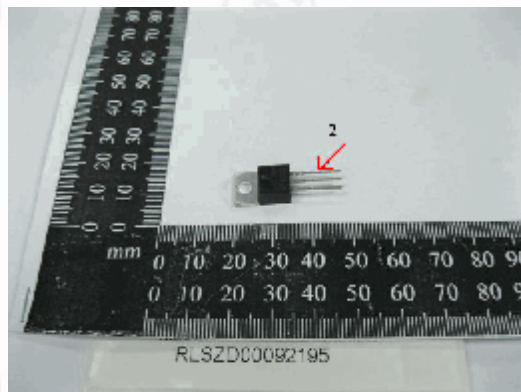
样品图片

Photo(s) of the sample(s)

样品 1 Sample No.1



样品 2 Sample No.2



*** 报告结束 ***
*** End of report ***

本报告无 CTI 盖章无效。本报告不得修改、增加或删除。此结果只对本次受测样品的结果负责。未经 CTI 书面同意，不得部分复制本报告，亦不可作为宣传品使用。

This report is considered invalidated without the Special Seal for Inspection of the CTI, This report shall not be altered, increased or deleted. The results shown in this test report refer only to the sample(s) tested. Without written approval of CTI, this test report shall not be copied except in full and published as advertisement.

深圳市宝安区 70 区鸿威工业园 C 栋

Building C, Hongwei Industrial Zone, Baoan 70 District, Shenzhen