

# Test Report

Report No.: RLSZD00104078

Page 1 of 6

**Applicant** : ZHAOQING FENGHUA NEO-VALLEY MICRO ELECTRONICS CO.,LTD

**Address** : 1ST FLOOR,3# BUILDING,FENGHUA ELECTRONICS INDUSTRIAL CTIY,  
18# FENGHUA ROAD,ZHAOQING,GUANGDONG,P.R.CHINA

**Report on the submitted sample(s) said to be:**

No.	Sample Name	Sample Description	Material
1	SOT-23 半导体分立器件	Silver color metal	金属引脚
2		Black body	本体 6 项

Part No. : SOT-23  
 Sample Received Date : Sep. 21, 2011  
 Testing Period : Sep. 21, 2011 to Sep. 24, 2011

**Test Requested** : 1.As specified by client, to determine the Lead, Cadmium, Mercury, Hexavalent Chromium, PBBs&PBDEs content in the submitted sample.  
 2.As specified by client, to identify if there is the Hexavalent Chromium in the submitted sample.

**Test Method:** Please refer to the following page(s).

**Test Result(s):** Please refer to the following page(s).

Tested by

Approved by



Inspected by

Date

*Vargas*

Sep. 29, 2011

No. 14018461

# Test Report

Report No.: RLSZD00104078

Page 2 of 6

**Test Method :**

Tested Item(s)	Test Method	Measured Equipment(s)	MDL
Lead (Pb)	IEC 62321:2008 Ed.1 Sec.9	ICP-OES	2 mg/kg
	IEC 62321:2008 Ed.1 Sec.10		
Cadmium (Cd)	IEC 62321:2008 Ed.1 Sec.9	ICP-OES	2 mg/kg
	IEC 62321:2008 Ed.1 Sec.10		
Mercury (Hg)	IEC 62321:2008 Ed.1 Sec.7	ICP-OES	2 mg/kg
Hexavalent Chromium (Cr(VI))	IEC 62321:2008 Ed.1 Annex B	UV-Vis	/
	IEC 62321:2008 Ed.1 Annex C		2 mg/kg
Polybrominated Biphenyls (PBBs)	IEC 62321:2008 Ed.1 Annex A	GC-MS	5 mg/kg
Polybrominated Diphenyl Ethers (PBDEs)	IEC 62321:2008 Ed.1 Annex A	GC-MS	5 mg/kg

**Test Result(s):**

Tested Item(s)	Content	
	Sample No.1	Sample No.2
Lead (Pb)	N.D.	N.D.
Cadmium (Cd)	N.D.	N.D.
Mercury (Hg)	N.D.	N.D.
Hexavalent Chromium (Cr(VI))	/	N.D.

Tested Item(s)	Conclusion
	Sample No.1
Hexavalent Chromium (Cr(VI))	Negative

# Test Report

Report No.: RLSZD00104078

Page 3 of 6

**Test Result(s):**

Tested Item(s)	Content
	Sample No.2
<b>Polybrominated Biphenyls(PBBs)</b>	
Monobromobiphenyl	N.D.
Dibromobiphenyl	N.D.
Tribromobiphenyl	N.D.
Tetrabromobiphenyl	N.D.
Pentabromobiphenyl	N.D.
Hexabromobiphenyl	N.D.
Heptabromobiphenyl	N.D.
Octabromobiphenyl	N.D.
Nonabromobiphenyl	N.D.
Decabromobiphenyl	N.D.
<b>Polybrominated Diphenyl Ethers(PBDEs)</b>	
Monobromodiphenyl ether	N.D.
Dibromodiphenyl ether	N.D.
Tribromodiphenyl ether	N.D.
Tetrabromodiphenyl ether	N.D.
Pentabromodiphenyl ether	N.D.
Hexabromodiphenyl ether	N.D.
Heptabromodiphenyl ether	N.D.
Octabromodiphenyl ether	N.D.
Nonabromodiphenyl ether	N.D.
Decabromodiphenyl ether	N.D.

**Note:** The samples had been dissolved totally tested for Lead, Cadmium, Mercury.

-MDL = Method Detection Limit

-N.D. = Not Detected (<MDL)

-mg/kg = ppm = parts per million

-Negative = Absence of Cr(VI), the detected Cr(VI) concentration in the boiling water extraction solution is less than 0.02 mg/kg with 50cm<sup>2</sup> sample surface area used.

# Test Report

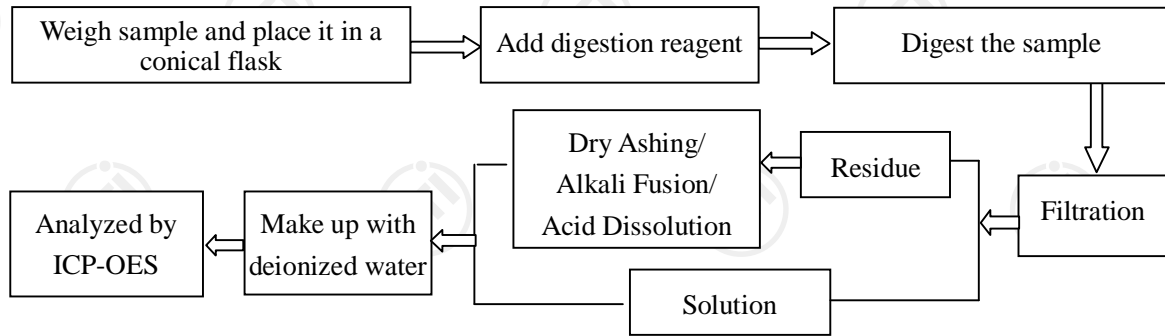
Report No.: RLSZD00104078

Page 4 of 6

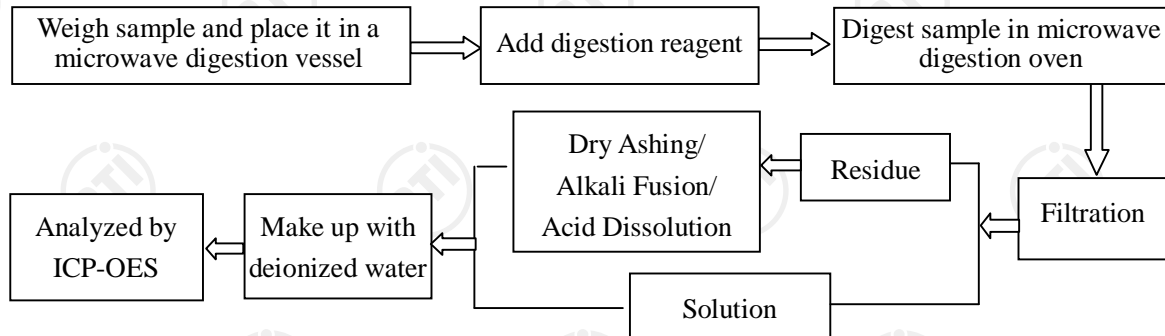
**Test Process :**

**1. Test for Pb/Cd Content**

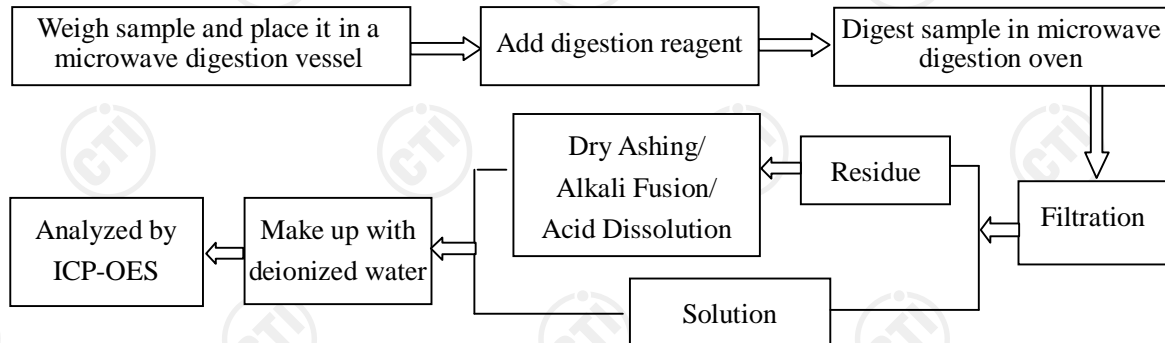
**(1) IEC 62321:2008 Ed.1 Sec.9**



**(2) IEC 62321:2008 Ed.1 Sec.10**



**2. Test for Hg Content**



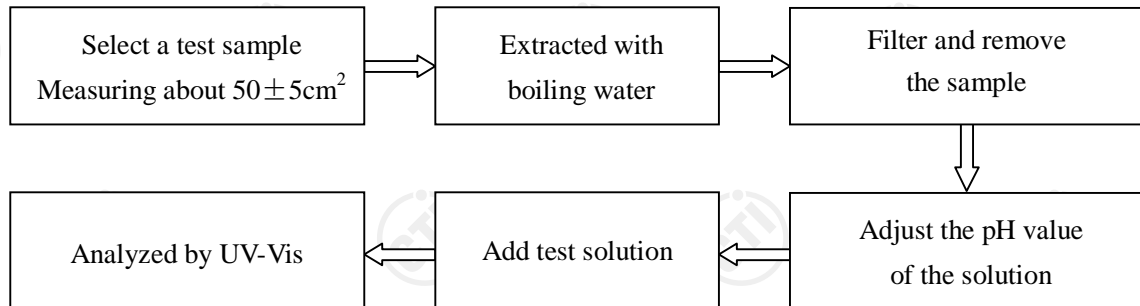
# Test Report

Report No.: RLSZD00104078

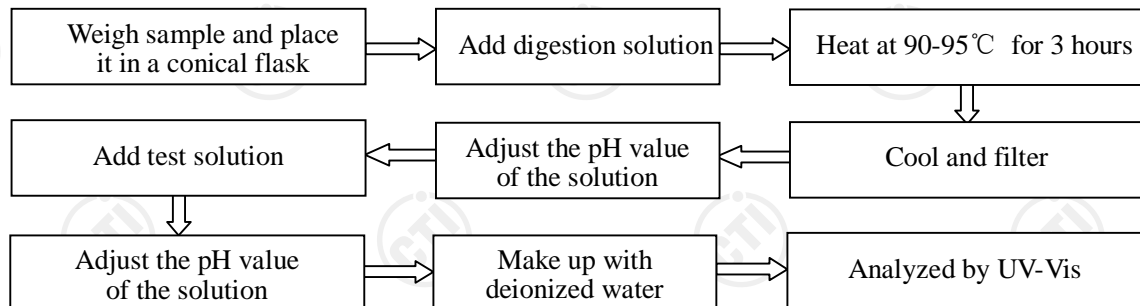
Page 5 of 6

## 3. Test for Chromium(VI) Content

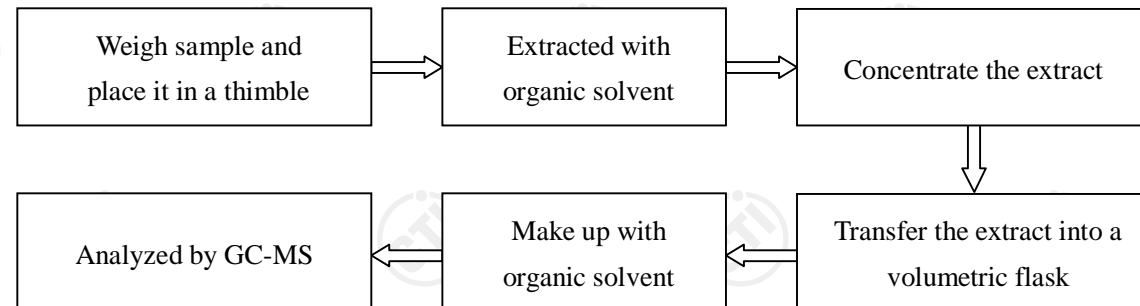
### (1) IEC 62321:2008 Ed.1 Annex B



### (2) IEC 62321:2008 Ed.1 Annex C



## 4. Test for PBBs/PBDEs Content

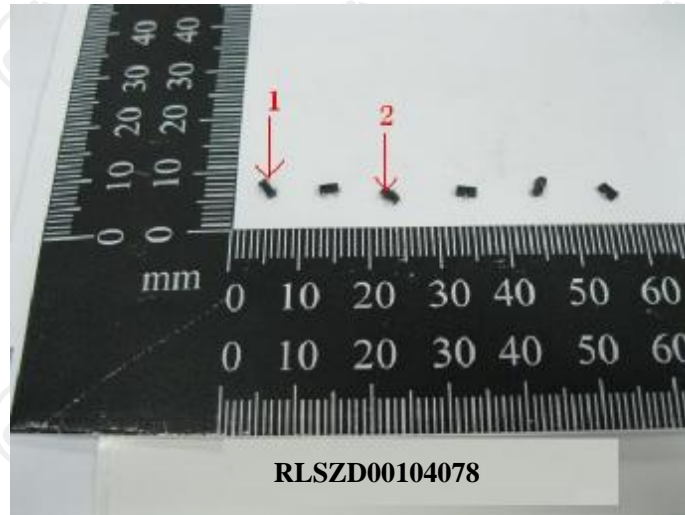


# Test Report

Report No.: RLSZD00104078

Page 6 of 6

## Photo(s) of the sample(s)



\*\*\* End of report \*\*\*

This report is considered invalidated without the Special Seal for Inspection of the CTI, This report shall not be altered, increased or deleted. The results shown in this test report refer only to the sample(s) tested. Without written approval of CTI, this test report shall not be copied except in full and published as advertisement.

Building C, Hongwei Industrial Zone, Baoan 70 District, Shenzhen